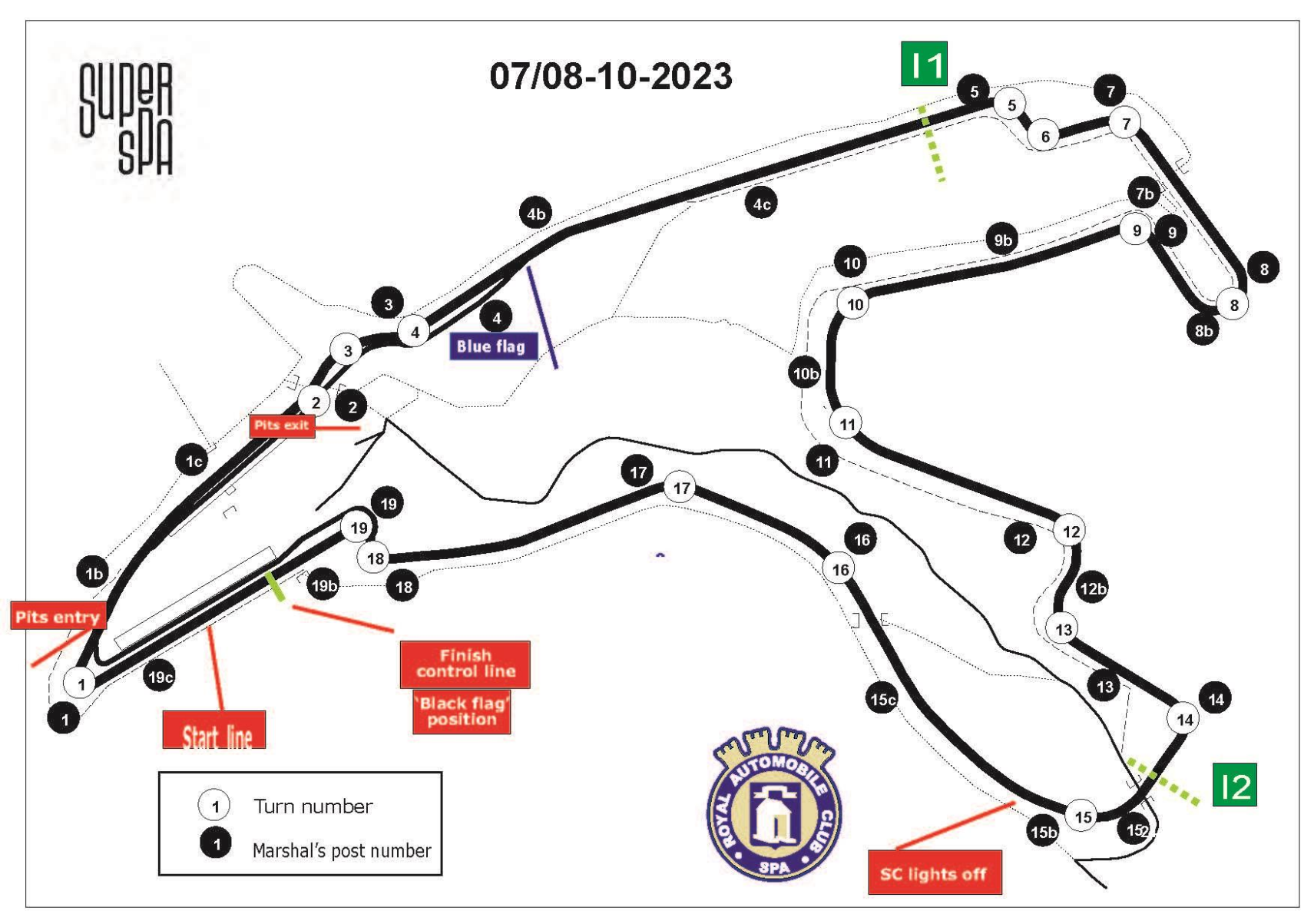


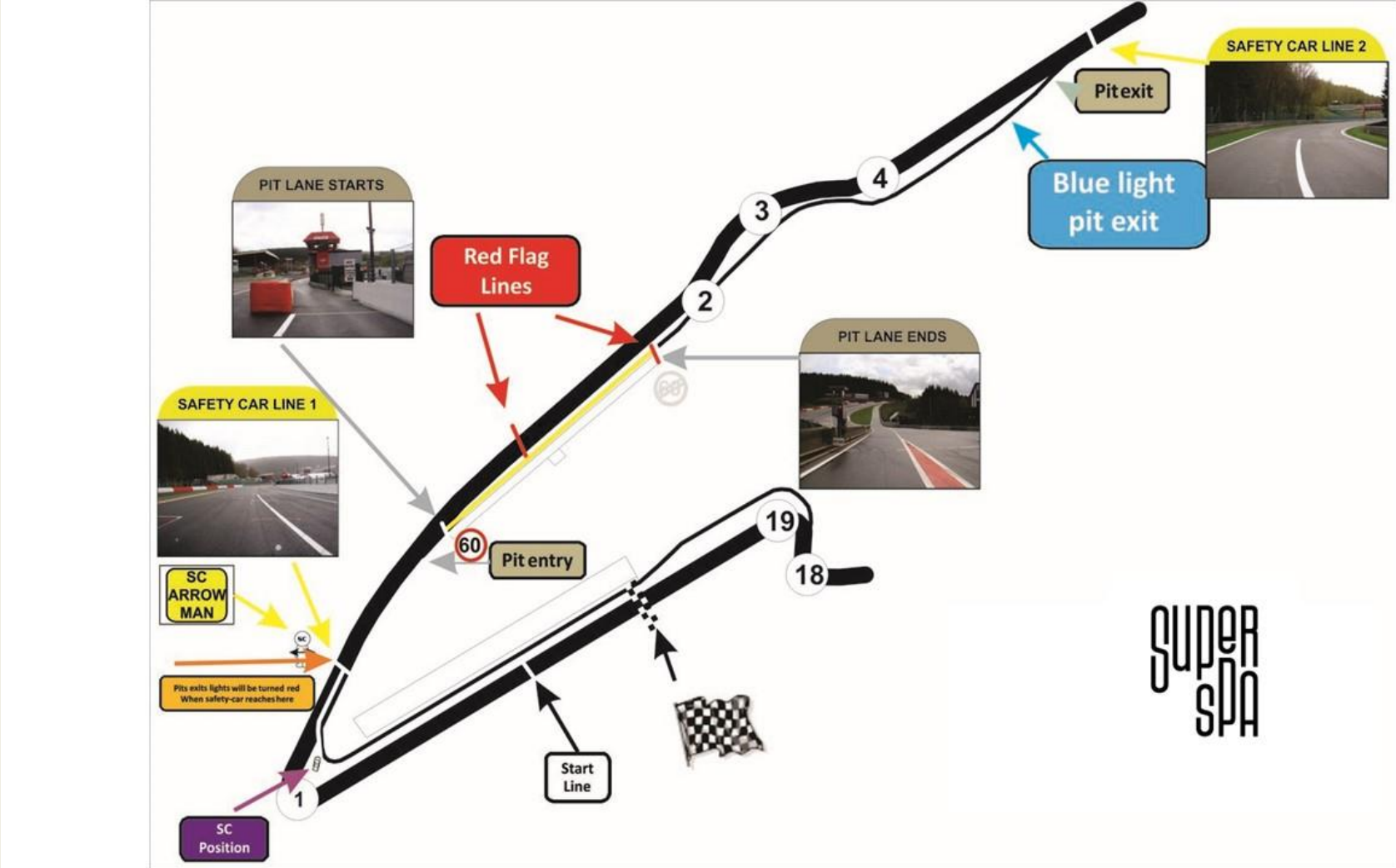
**SUPER
SPA**

**2023: SPA
ARDENNES
CHALLENGE
DRIVERS'
BRIEFING**

Circuit map

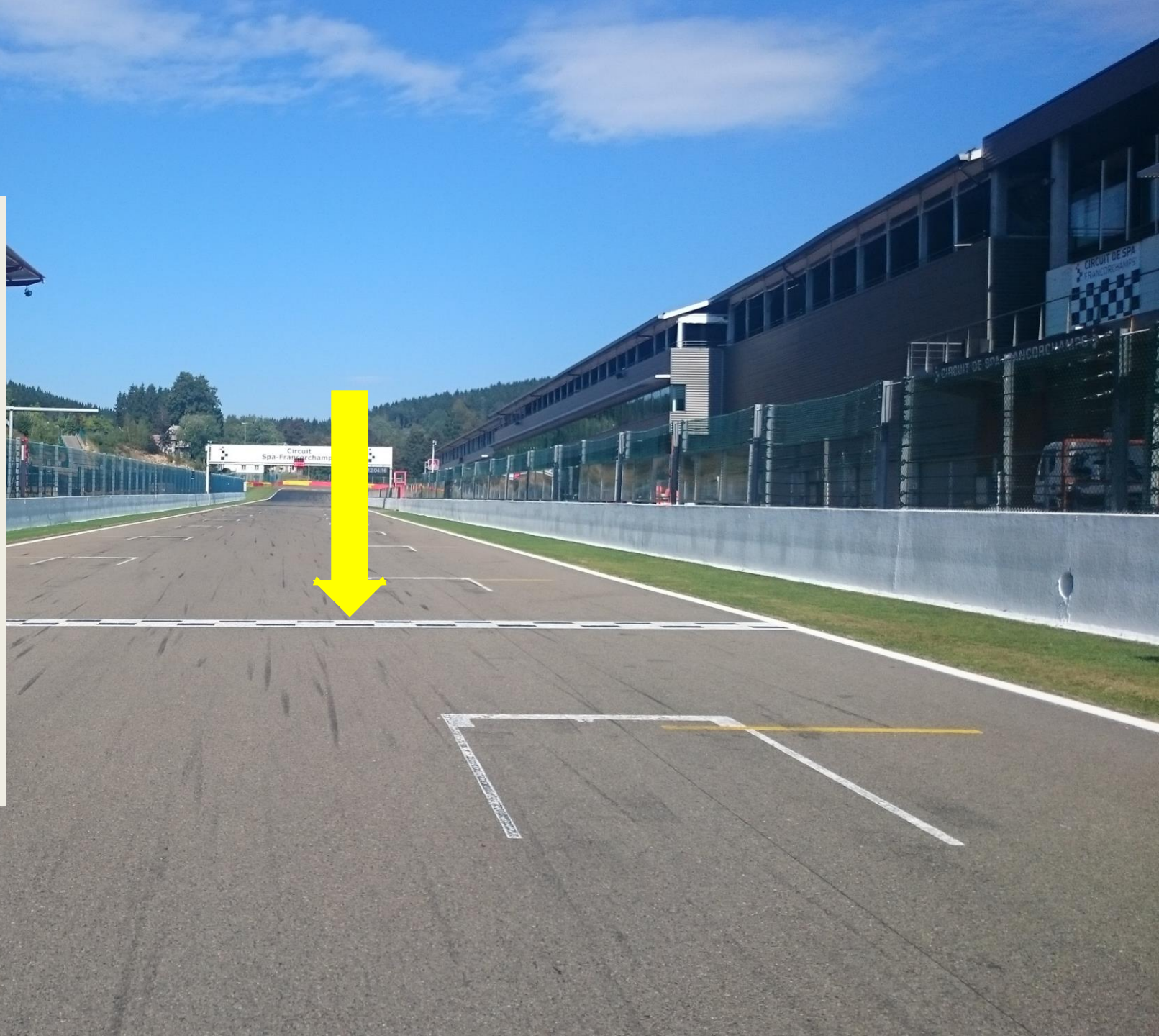


Pit Lane Map



SUPER
SPA

**CONTROL
– FINISH
LINE**



**START
LINE**

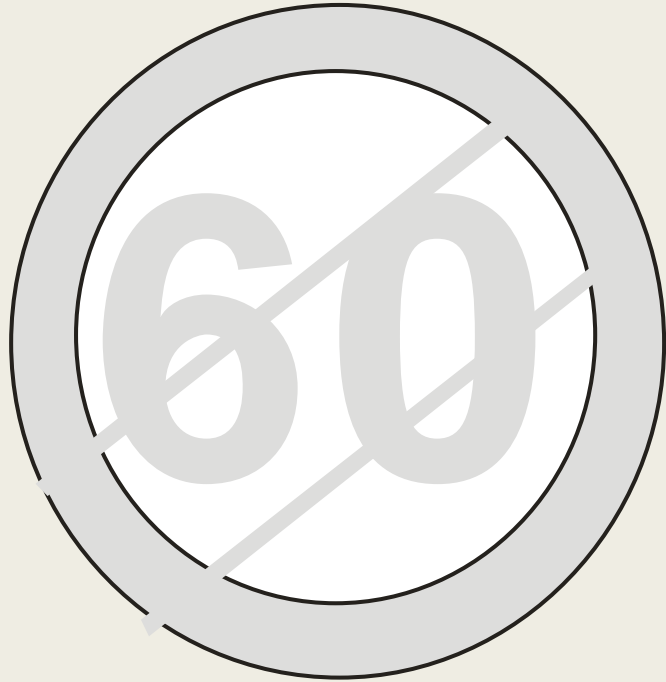




**Pits entry
RHS after T1**

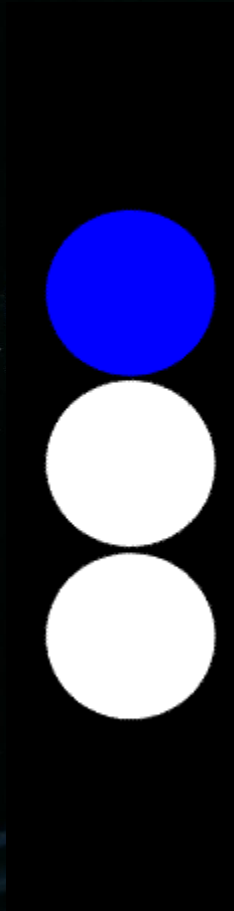


Pits exit – speed limit ends



Repeater Blue Flag Marshal @ Pits exit





Track marshal repeater blue light @ pit exit

OPENINGS FOR CARS



EMERGENCY WINDOWS



End of the Races

- No deceleration lap - ! Marshals on Track after T1 !
- All cars by T1 La Source to Endurance Pit Lane
- Pit garage Endurance.





ESCAPE ROAD @ TURNS 5 – 7

Pits entry & exit Lines & bollards

Pit Entry after La Source

Pictures Pit exit endurance after T4



Clear the Grid

**No
Trolleys**



Racing Staff, staff members by the gate in F1



Clear the grid!



Start line

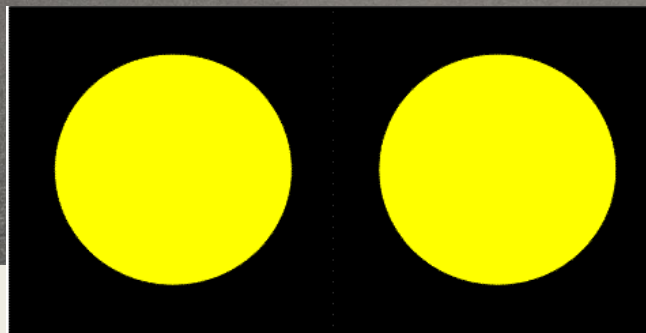
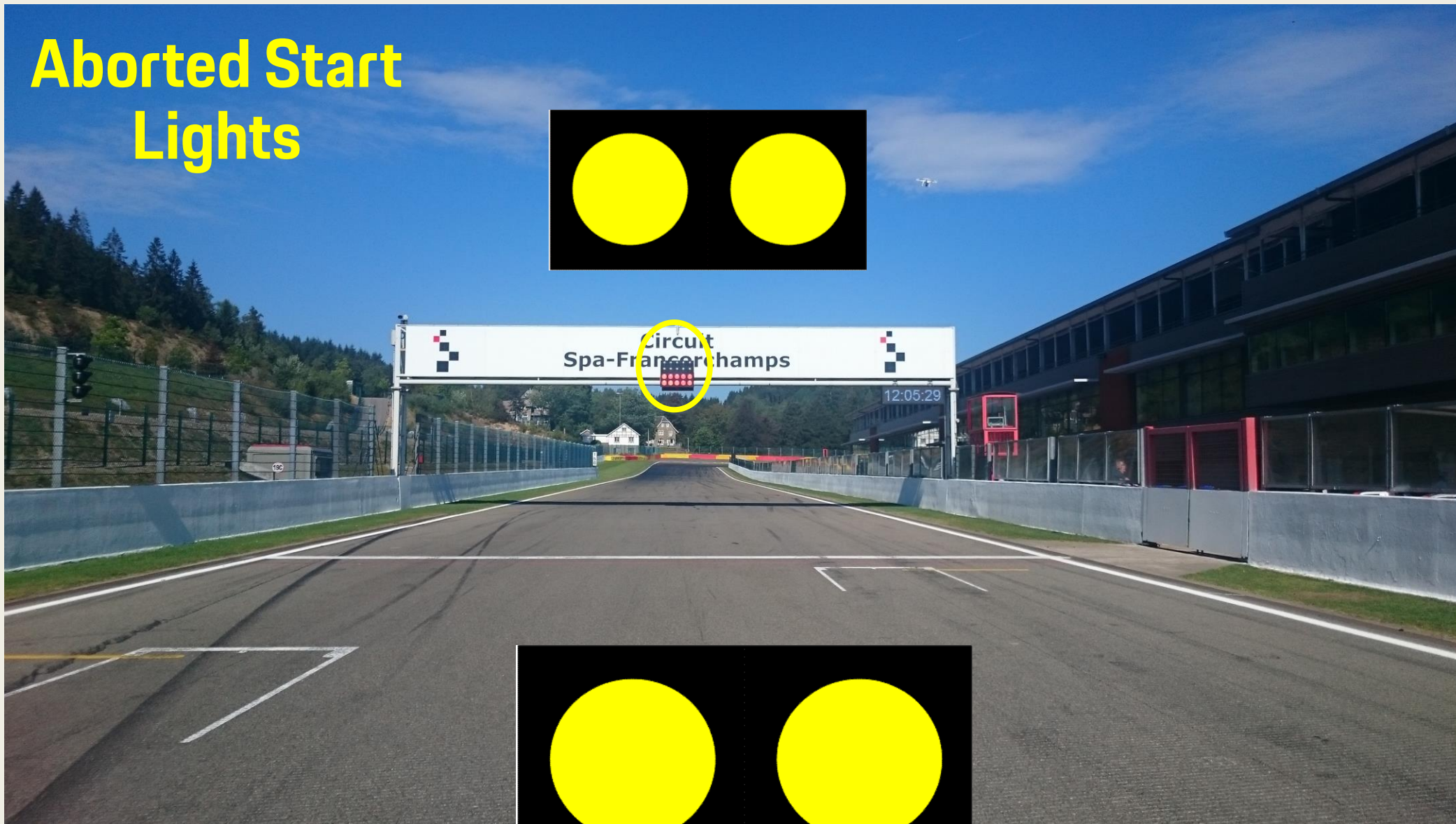
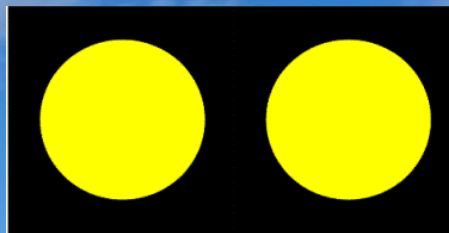


Circuit
Spa-Francorchamps



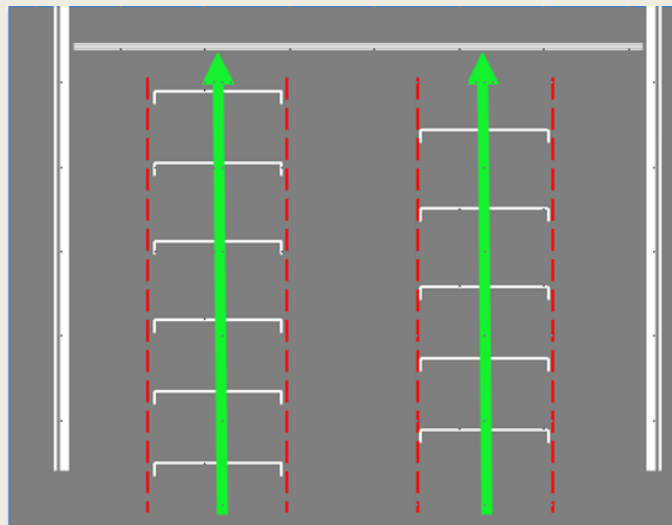
Start Lights: Red On/Off

Aborted Start Lights

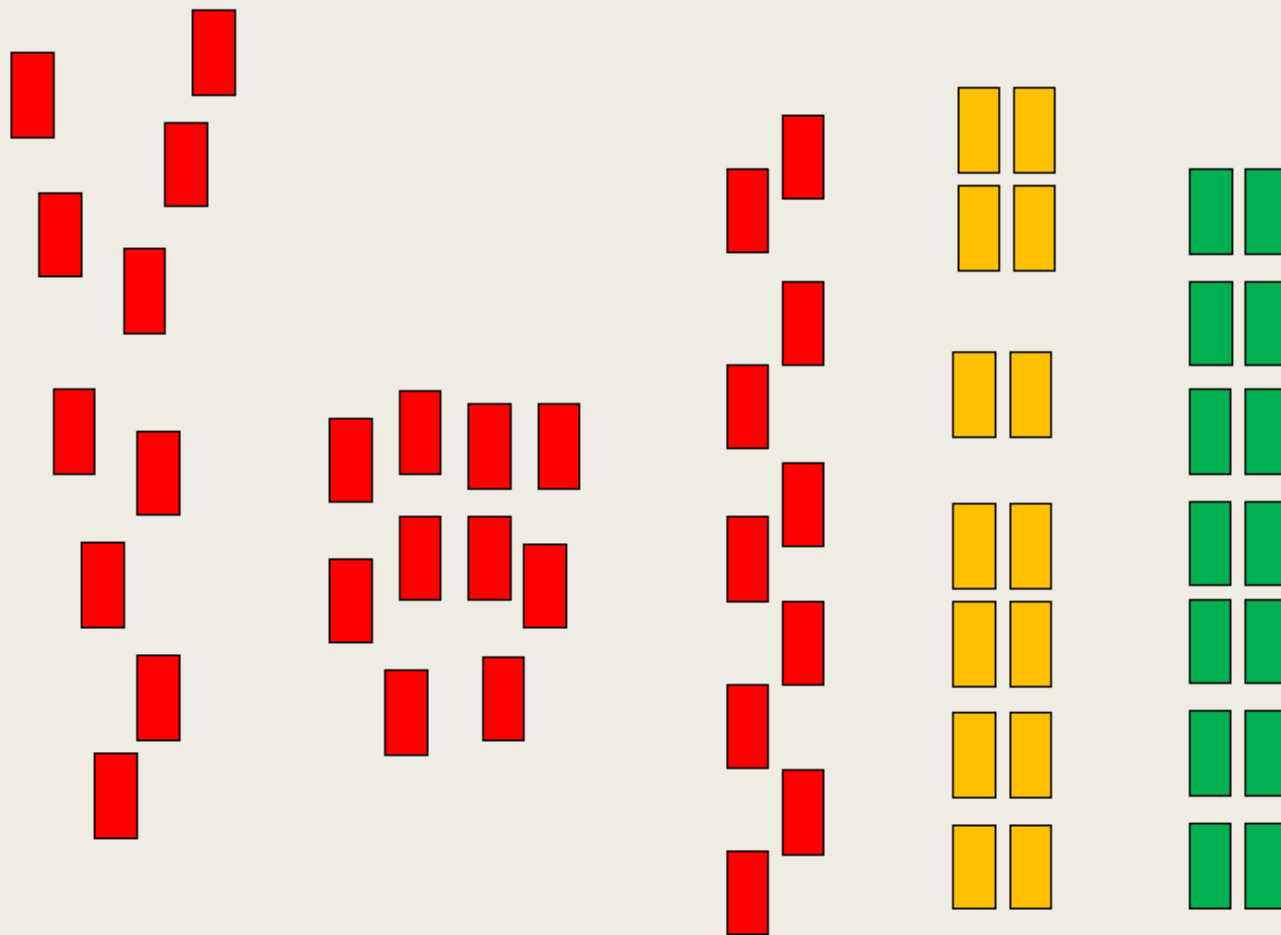


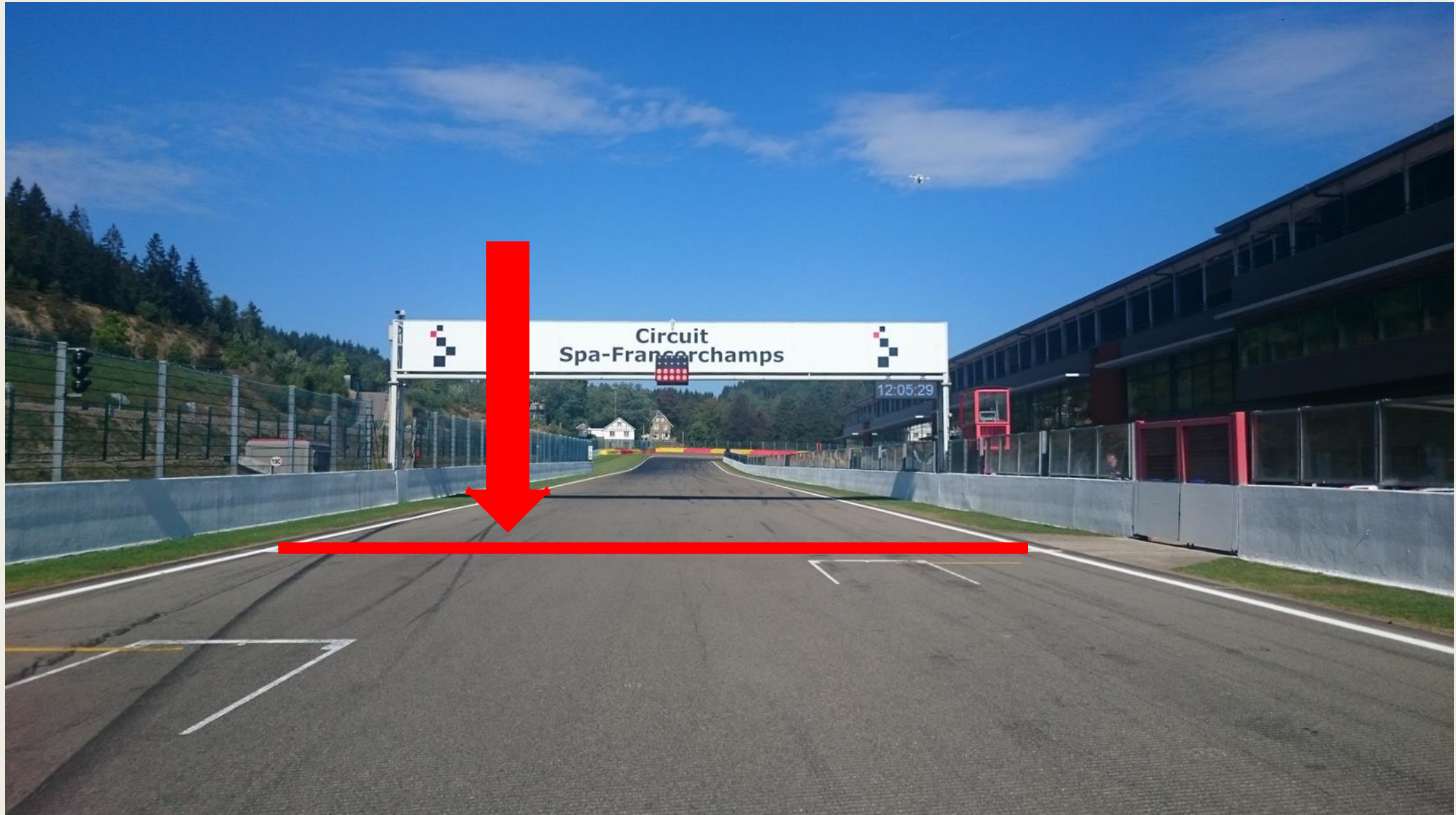
Example of right formation

The cars must hold the starting formation by driving from the beginning over the „starting boxes“ on their respective sides (starting corridors).



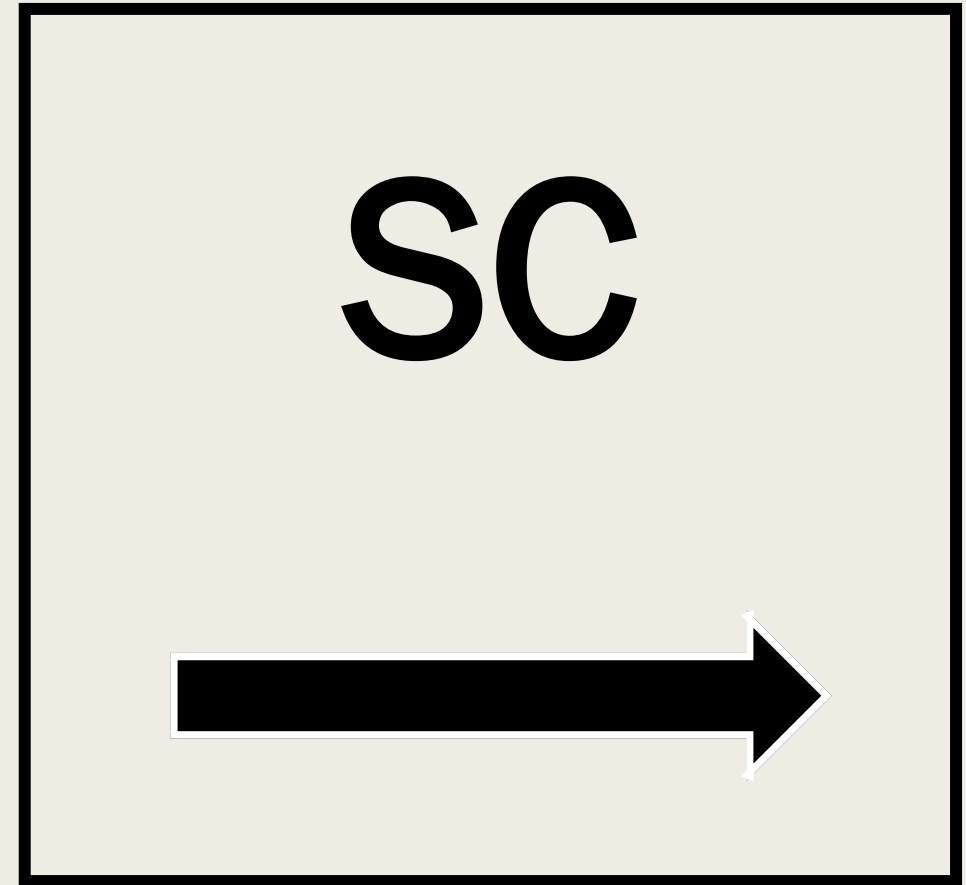
Formation: Red = No Green = Yes





Red Flag Line – Race Suspended

Safety-Car Arrow Man

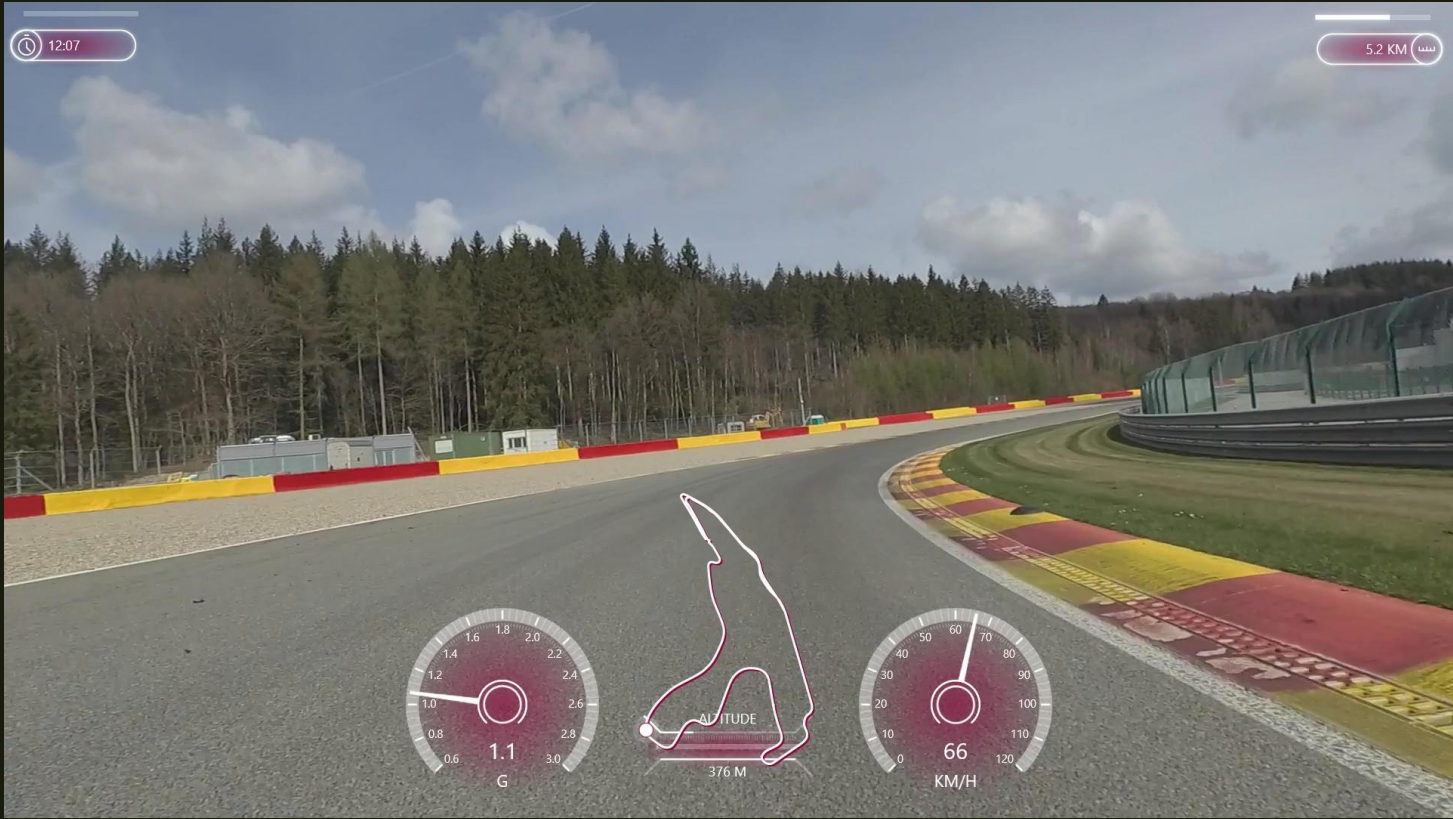




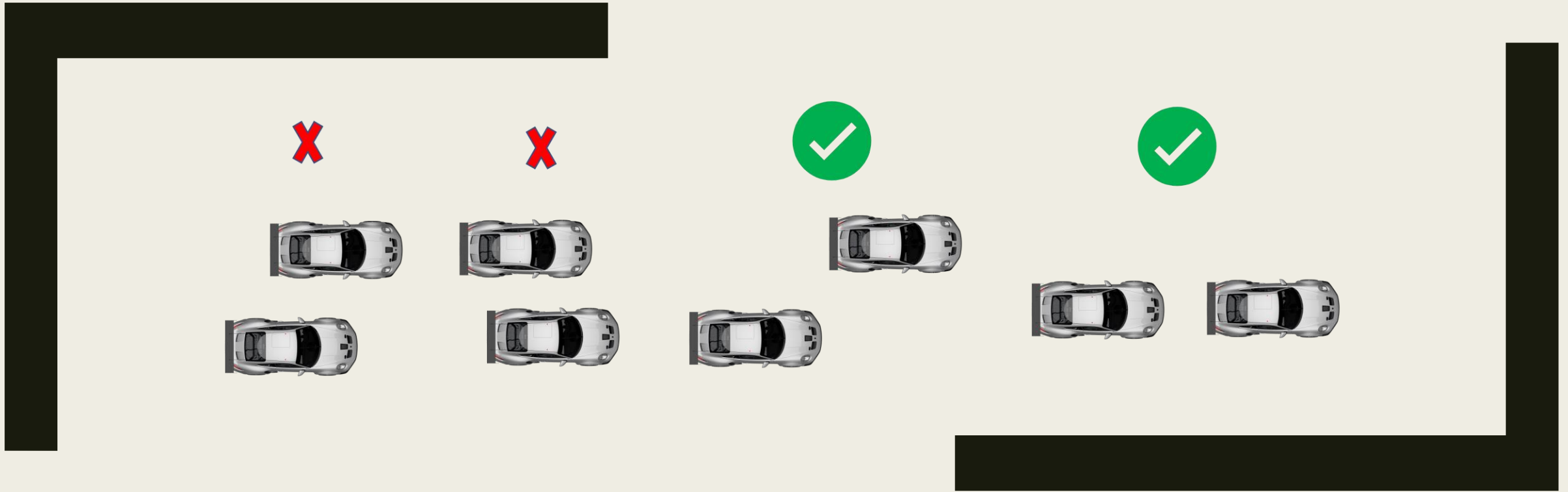
SAFETY CAR LINE 1



SAFETY CAR LINE 2

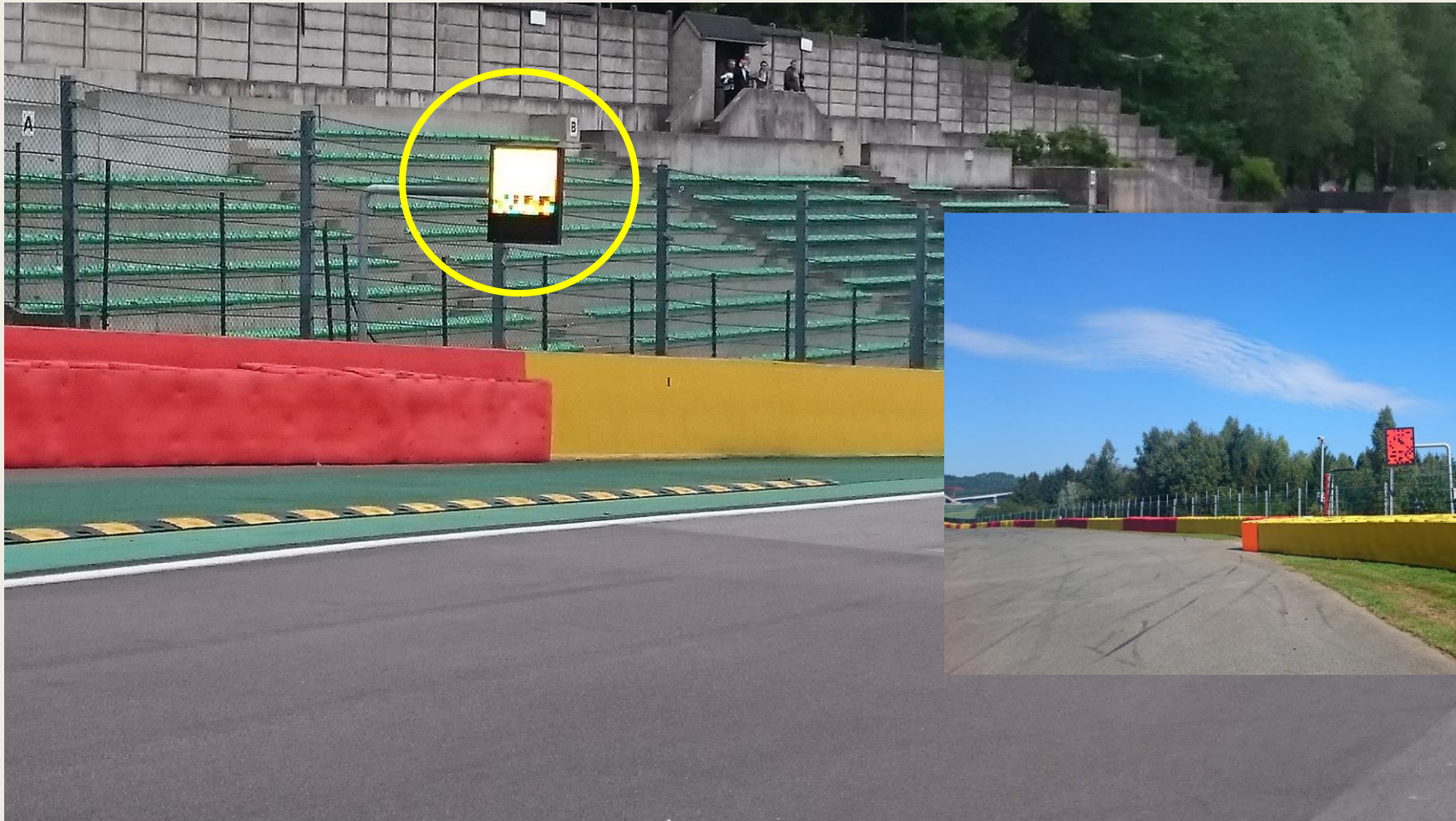


SAFETY-CAR LIGHTS OFF

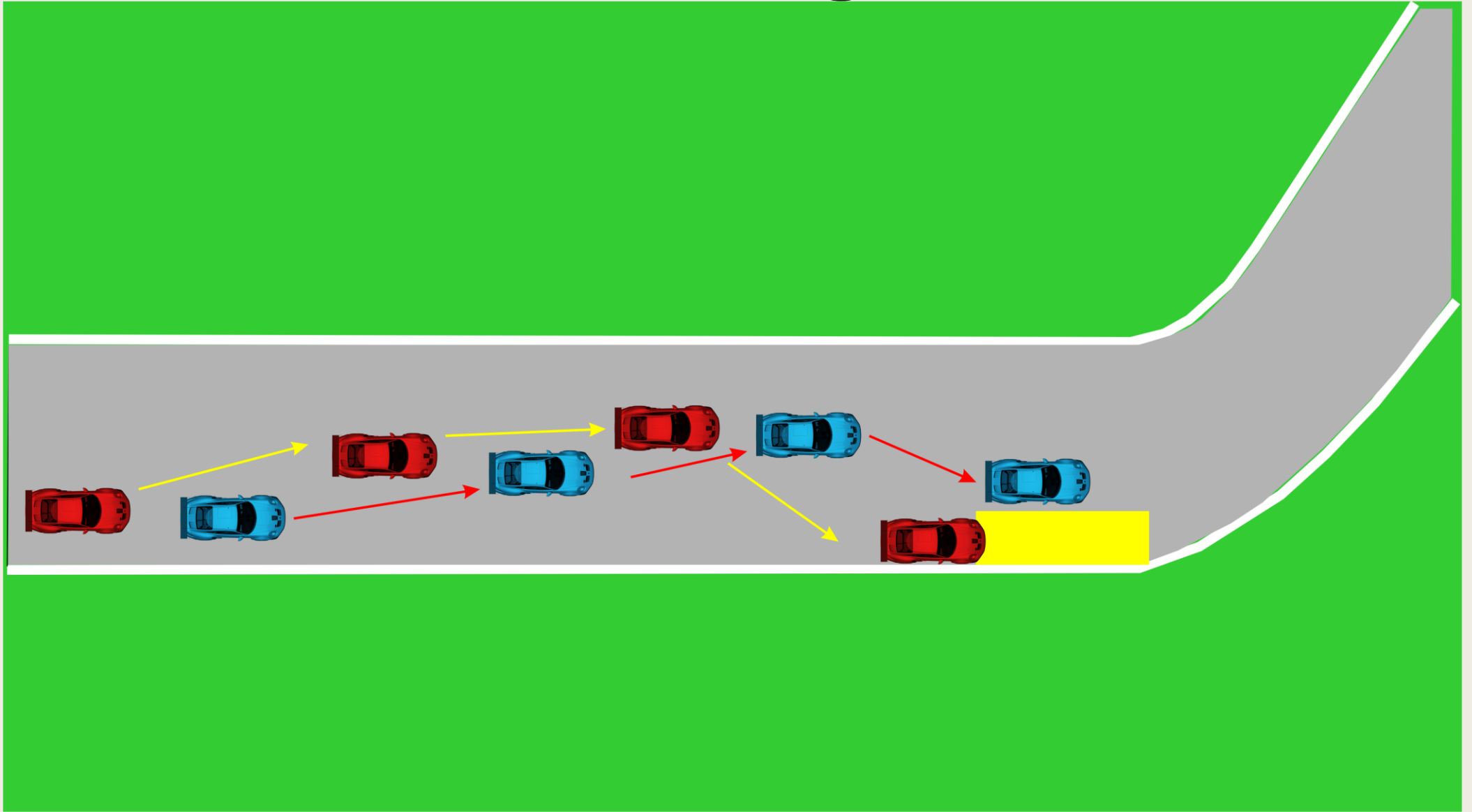


RE-START UNDER SAFETY-CAR

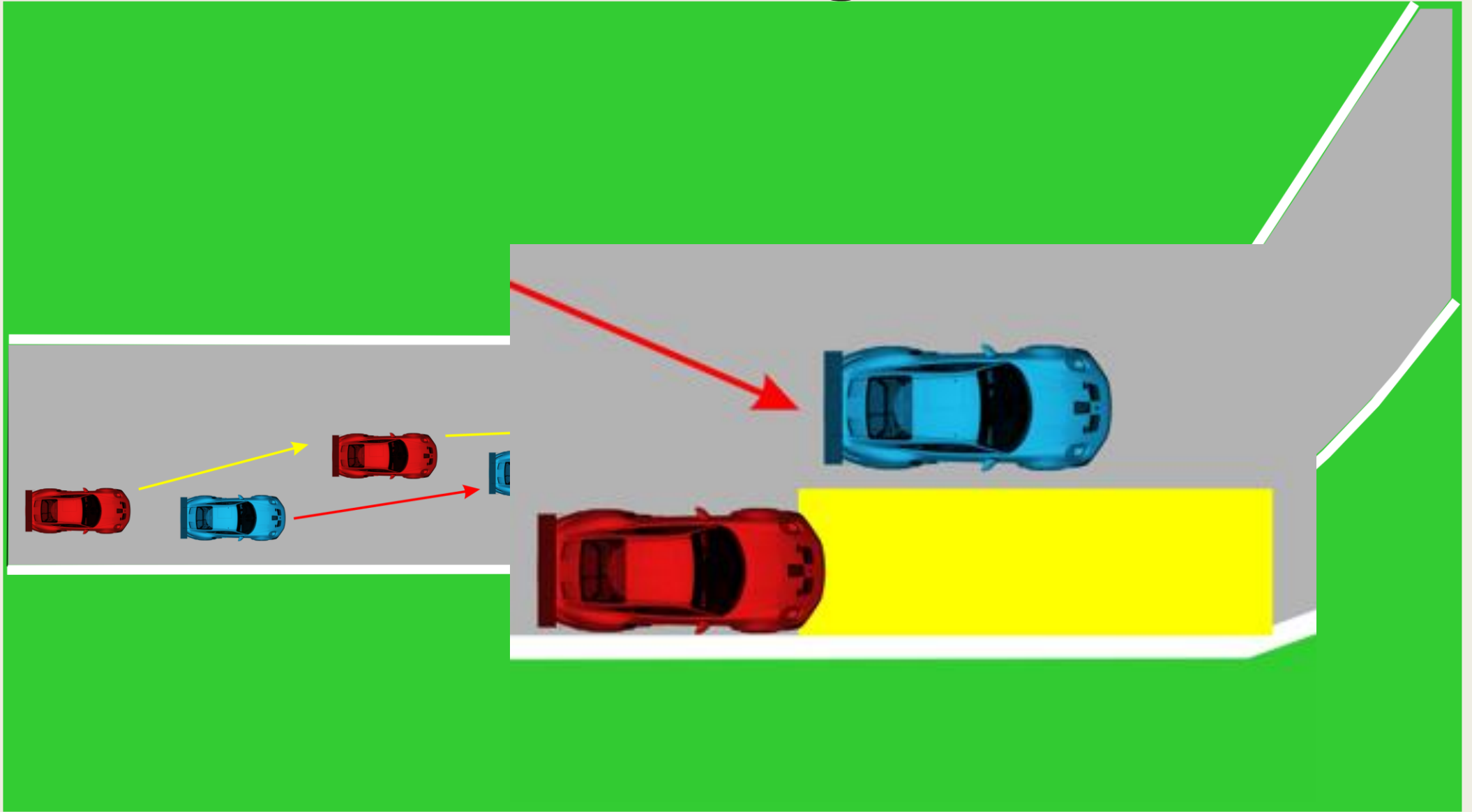
Yellow Flags – Marshaling Lights System



Overtaking



Overtaking



1



OK

2



WRONG

3



WRONG

OVERTAKING

Signaling Platform



Drive
Through



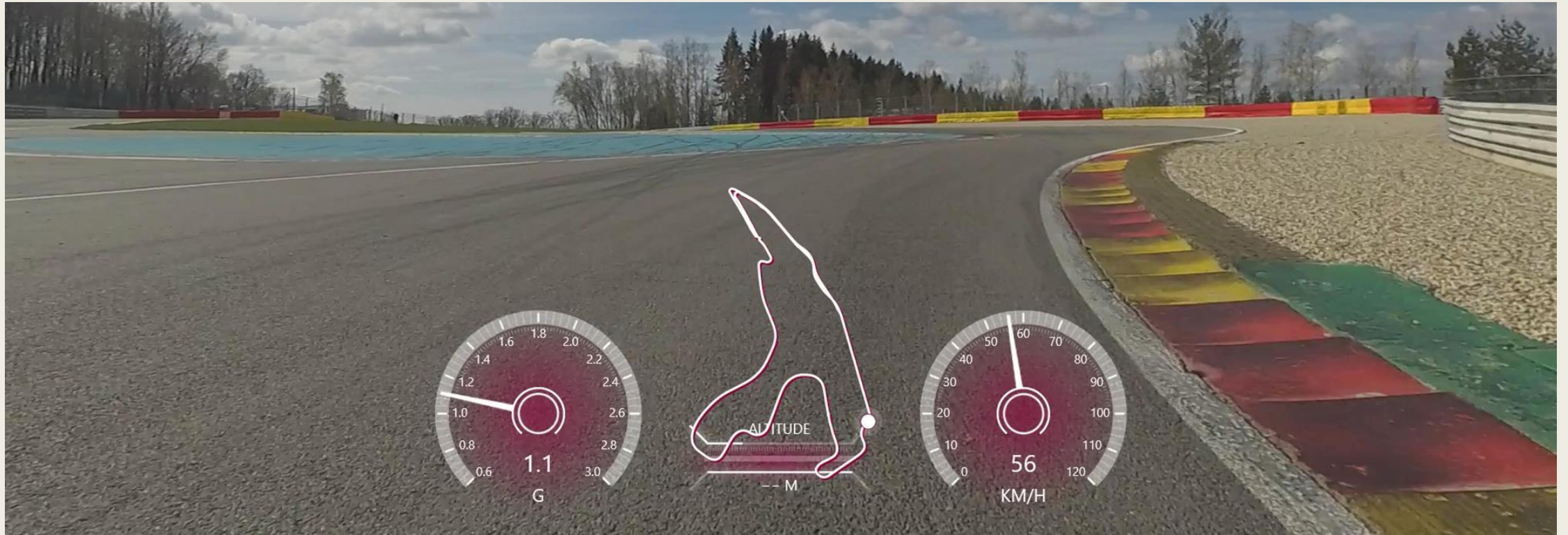
**STOP &
GO
PENALTY
BOX**



Appendix L – Track Limits



T5



Pit window

Between the min 00:10' of the race and the minute 00:25' of the race

1min + time from Pit in to Pit out'

Track access & Track exit

- Track access : T4
- Track exit T1 – no deceleration lap



Enquiry Form

Super Spa
© 2023

Super Spa


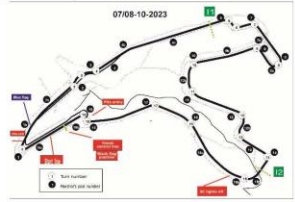
Race Number **SERIES :**

Name of the driver :

Date : **Hour :**

Reception by the clerk of the course :

Attachment : pages

Locate incident area:  

Time in the session:

Cars# involved: **Session:**

Communication :

ANSWER :

**HAVE A NICE & SAFE
RACE**